



Partnering for Flow Control



Sagiv is proud to present:

A High quality and Robust - **Plastic SY3**
for hydraulic flow control applications



SY3
Shared inlet
and 3 outlets



SY6
Shared inlet
and 3 outlets



SY3
Plastic version

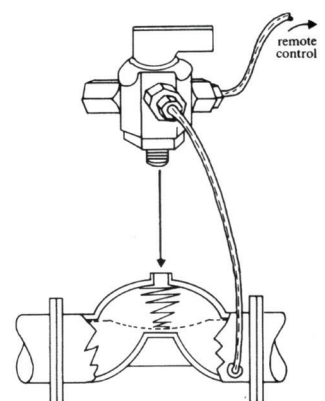
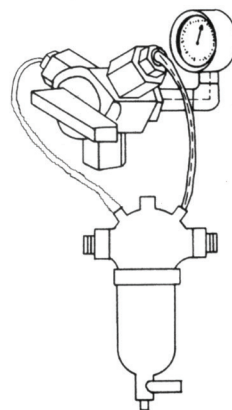
The SY three-way ball valves are the professional's choice for hydraulic flow control. The valves are constructed with a common port at the base of the valve body. Any of the three peripheral ports can be connected to the common port – the other ports are totally sealed. The SY is designed for three hydraulic control positions: Open, Closed, and Automatic. The new member to the SY family is a durable plastic SY3 unit, made from Reinforced Nylon. The unit maintains all the Brass SY3 characteristics, while enjoying the advantages of a plastic based valve.

Applications

- Automatic and computerized irrigation systems for agriculture and landscape gardening
- Filtering, industrial, domestic water supply and fire fighting systems

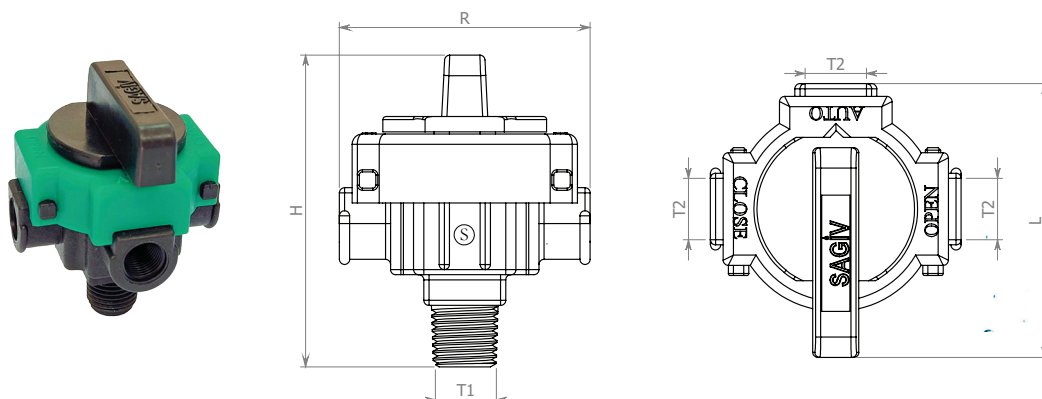
Typical Use

- Integration within remote control systems while retaining manual open/close functions to all sizes of hydraulic valves (SY3/SY6)



NEW! Plastic based SY3

- The valve body is made from reinforced Nylon
- The valve ball is made from Brass with Nickel-Chrom plating



Assembly No.	T 1	T 2	H	L	R
1Y3A04100A	NPT 1/4" M	NPT 1/8" F	61	54	49
1Y3A04000B	BSPT 1/4" M	BSP 1/8" F	61	54	49

Metal SY3 and SY6

- The valve body is made from Brass
- The valve ball is made from Brass with Nickel-Chrom plating



Cat. No. BSP	Cat. No. NPT	Model	Inlet	Open	Close	Remote	Qty/Box
1Y3A02000	—————	SY-3	1/8" M	1/8" F	1/8" F	1/8" F	50
1Y3A04000	1Y3A04100	SY-3	1/4" M	1/8" F	1/8" F	1/8" F	50
1Y3N040A4	—————	SY-3	1/4" F	1/8" F	1/8" F	1/4" M	50
1Y6N04000	—————	SY-6	1/4" F	1/4" F	1/4" F	1/4" F	25
1Y6A04000	1Y6A04100	SY-6	1/4" M	1/4" F	1/4" F	1/4" F	25

Highlights

- Compact size
- Easy to assemble
- The positions: Open, Closed, Auto
- Easy viewing of the operating position
- Only one moving part – Ball valve mechanism
- All valves are sealed when in a 'between port position'
- High quality Teflon seals and Chrome-Nickel plated balls
- The hydraulic valve can be manually opened/closed

Specifications

- Ball valve mechanism
- Max working pressure: 10 BAR
- Water Passage size:
 - SY3: 3.2 mm (1/8")
 - SY6: 6.0 mm (1/4")